



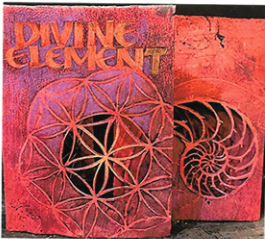
**Violet Smythe**

Rose. Collage and layered piece with pigma pen stretch lettering & drawn versals and gel pen.



**Violet Smythe**

The flower doesn't dream of the bee. Quote by Mark Nepo. Watercolour and graphite.

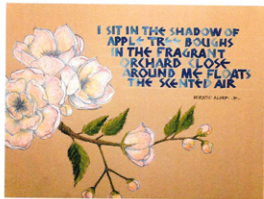


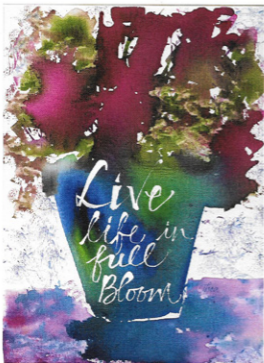
**Christine Ahmad**

Divine Elements. Inspired by Pamela Paulsrud's class, sacred geometry. Paste paper using handcut stencils with selective elements cut out.

**Violet Smythe**

Apple blossoms. Horatio Alger Jr quote. Submission 2 for tree book project for Fairbanks Calligraphy Society. Colour pencil on mill tentes paper and gouache neuland lettering.





**Thes Lynn Paul**  
 Live Life in Full Bloom. 8 x 10 inch. Inks  
 and folded pen with Bleedproof white .

Grandfather trees  
 Seen of them  
 Love  
 Truth  
 Wisdom  
 Humility  
 Respect  
 Honesty  
 Bravery  
 Creating Sacred Space  
 We played amongst them for years  
 Unaware  
 Patient teachers waiting for the  
 moment they will be recognized  
 Spiritual Guardians  
 House of heart in their midst

**Jennifer Peddesden**  
 Folded Ruling pen in Italic and Yasutomo Sumi Ink.



**Renate Worthington**  
 This was my entry in The Alberta Flood  
 Rose Project, (in 2013), an art  
 collaboration created to raise funds for  
 Red Cross flood relief in Alberta. Painted  
 rib and watercolours for the background  
 and letters.

**Yogi Grunwald**  
 Life Is Like a Cactus. 5 x 7 inch. Cactus  
 stamps, quilled flowers. Lettering with Zig  
 Writer both fine tip and bullet tip and a  
 take on the "Chalkline Funk" font by  
 Suzanne Cannon.

